

A satellite-style map of Argentina, showing the country's geographical features, including the Andes mountains in the west, the Patagonian plateau, and the Rio de la Plata estuary. The map is overlaid with a blue grid.

Thinking about **Exploring** in Argentina?

Mining, Marketing and
Management

About us

Rojas & Asociados is an innovative mining consulting firm focused in the Latin American market. Our expertise in mining, marketing and management allow us to provide comprehensive professional services to the mining sector.

With offices in Argentina (Mendoza and Salta) and a branch in Chile, a highly skilled and diversified staff with a unique approach, the firm serves mining companies with an interest in Argentina or Chile as well as select suppliers.

What we do

The firm provides strategic advice on exploration management, generative exploration, negotiation, public relations, provincial political and social situation, among others.

The Rojas staff managed a handful of junior exploration mining companies from initial evaluation to preliminary feasibility through a versatile outsourcing model, where our professionals entrusted with the majority of the areas. Collaboration with our clients was key to the success of this approach.

Key strengths and accomplishments

- Typical exploration budget overseen ranges from 3M to 5M US annually, per client.
- Supervision of several simultaneous drilling programs, for different clients, in various provinces.
- Flexibility to adapt to diverse levels of involvement of clients.
- Extensive network of contacts in Argentina and Chile.
- Bilingual capabilities.
- Local management outsourcing model: tenements, administration and exploration management, all in one firm.
- Coordination of settlement with legal and accounting support.



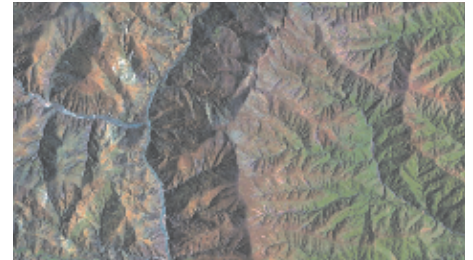
Senior management team: Javier Rojas, Nelson Rojas, Nivaldo Rojas, Paola Rojas and Victor Bonifis.

Projects and Assignments

Since our beginnings, in 1998, we handled a variety of programs and assignments, some of which include:

Mining. Exploration and consultancy

- Advanced exploration programs: Diablillos. Silver Standard / Los Azules. Minera Andes / Cerro Negro. Oroplata / San Jorge. Coro Mining / Amarillo. ATW.
- Geological Consultancy. Los Bronces. Chile. Angloamerican.
- Prospecting programs: Canguro and Cerro Tin Tin. Globe Uranium / Cerro Pelado. Cementos Bio Bio / Generative program. Li3 Energy.
- Consultancy. Regalito Project, Chile. Global Copper.
- QA/QC. Minera Andes / Silver Standard.
- NI 43101 Reporting. Minera Andes / ATW / Pacific Bay.



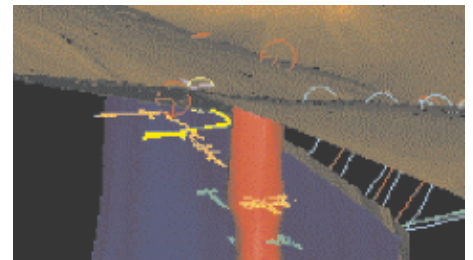
Mining. Project evaluation

- IAMGOLD'S Au/Cu projects, Ecuador and Peru. BHP Billiton.
- Project evaluation and exploration proposals. Olvidada Project, Chile. Magic Sky.
- Base metal ore deposits, Peru. BHP Billiton.
- Bermejo and Homero projects. Globe Uranium.
- Exploration, review of information, relogging. Taca Taca Project, Argentina. Lumina Copper.
- Bucaramanga uranium project. Colombia. Globe.



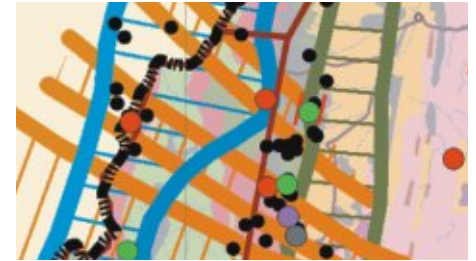
Mining. GIS

- Collection and validation of exploration data. Los Azules. Minera Andes.
- Generation of geological models and 3D image display of ore deposits. Canguro. Globe Uranium / Diablillos. Silver Standard.
- Evaluation of ideal spacing for exploration drilling. Amarillo. ATW / M-18. Metallum.
- Database of previous exploration results. Taca Taca, San Jorge. Lumina.



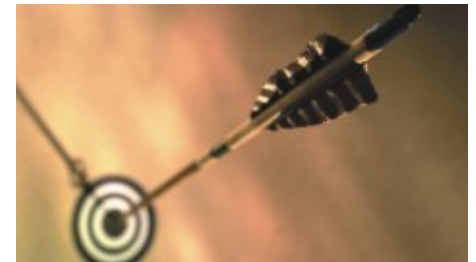
Mining. Resource inventories

- Base and precious metals. Yearly.
- Gold projects in Santa Cruz. 2009.
- Limestone in Buenos Aires and Argentina in general. 2008 - 2010.
- Silver deposits in Argentina and Chile. 2006 - 7.
- Copper deposits in Argentina. 2006 - 7.
- Uranium deposits in Argentina. 2005 - 6.
- Ore deposits of economic interest in Argentina. 2001.



Marketing. Market research and PR

- Mining companies active in Argentina. Yearly.
- Demand assessment for exploration services in Argentina. 2009.
- Comparative pricing analysis in Chilean piping suppliers. 2009.
- Valuation of drilling equipment. 2009.
- Competitive intelligence Study: Uranium in Argentina. 2007.
- Potential of Mining in Argentina for Chilean suppliers. 2000.
- Media monitoring. Silver Standard / Globe / ATW / Cliffs.



Management

- Directorship, public companies. Axiom.
- Management & directorship, local. Silver Standard / Globe Uranium / Metallum.
- Management. Li3 Energy / Global Copper / Magma Energy.
- Course "Economic Guidelines for Mineral Exploration", by Dr. M. Doggett.
- Tenements. Silver Standard Resources / Globe / Magma.
- Due Diligence. Amiches. ATW / M-18. Silver Standard / San Jorge. Coro Mining.
- Negotiation with public and state companies as well as private individuals. Osisko / Coro Mining / Silver Standard.
- Valuation of mining properties. Minera Triton.



Our clients

Our clients are located around the globe, but mainly in Canada.
Some of them include:



Anglo American
Anglogold Ashanti
ATW Venture
Aur Resources
Axiom Gold and Silver
Barrick
BHP Billiton
Boart Longyear
Cliffs Natural Resources
Corriente Resources
Coeur D'Alene
Coro Mining
CODELCO

Georg Fischer
Genesis Minerals
Globe Uranium
IAM Gold
Intrepid Minerals
Li3 Energy
Lumina Copper
Magma Energy
Metallum Resources
Mena Resources
Minera Escondida
Minera Andes
Mirasol Resources

Neptune Resources
Oroplata
Osisko Mining
Pacific Bay Minerals
Pan American Silver / Minera Triton
ProChile
Ramelius Resources
Regalito Copper
Silver Standard Resources / Pirquitas
Sumitomo
Talisker Exploration
Value Added Europe
Xstrata Copper

What they say...

"We retained Rojas & Asociados to carry out an exploration program that required quick and effective geologic execution. They did an excellent job not only with the exploration work, but also in corresponding with local officials. In addition, Nivaldo Rojas, the founder of Rojas & Asociados, is an outstanding geologist who adds value to every exploration program."

Ken McNaughton
VICE PRESIDENT, EXPLORATION
SILVER STANDARD RESOURCES INC.

"Minera Andes ... has contracted with Rojas & Asociados, a geologic consulting firm with special expertise in porphyry-hosted mineralization to manage Los Azules. Nivaldo Rojas, principal of the firm, formerly was country manager for Argentina for BHP Minerals. Prior to work in Argentina, Mr. Rojas was closely involved in BHP's early work at Escondida copper mine in Chile, one of the largest and most successful copper mines in the world."

Allen Ambrose
PRESIDENT
MINERA ANDES

"I am very pleased with the appointment of Mr. Rojas to our board of directors. Along with his vast experience in managing exploration projects we gain a wealth of expertise through our association with Rojas and Asociados. This relationship will open up excellent opportunities for us in both Argentina and Chile."

John Larson
CEO
AXIOM GOLD AND SILVER

Members of:

AusIMM - Australasian Institute of Mining and Metallurgy.

Colegio de Arquitectos, Mendoza.

GEMERA - Grupo de Empresas Mineras Exploradoras de la República Argentina.

IIMCH - Instituto de Ingenieros de Minas de Chile.

Cámara de la Minería de Salta.

Consejo Profesional de Geólogos e Ingenieros Mendoza.

PDAC - Prospectors Developers Association of Canada.

SEG - Society of Economic Geologists.

www.rojasyasociados.com

Contact us at:

Main Office

Agustín Álvarez 1348. Barrio Arizu. Godoy Cruz.

M5501BFB. Mendoza. Argentina.

Phone / Fax: +54 (261) 424 3479 (PBX).

Salta Office

Los Cebiles 110. Barrio Tres Cerritos.

A4408JYD. Salta. Argentina.

Phone / Fax: +54 (387) 439 8822 (PBX).

info@rojasyasociados.com